

Session 4 - Supporting Employee Well-Being: Workforce Program Best Practices and Integrating Work-from-Home and Return-to-Work



Linda Frankl, A.A.E.

Director, Senior Practice Leader

ADK Consulting & Executive Leadership Search

(Moderator)

Currently a Senior Project Manager with ADK Consulting and Executive Search, a firm known to the aviation industry that advances leadership by building enduring partnerships and offering client focused innovative solutions. Linda has been an aviation administration professional for over 33 years. Linda has a Bachelor of Science degree from Embry-Riddle Aeronautical University and received her designation as an Accredited Airport Executive in 1993.

Over the course of her career, she has been very active in industry leadership positions and was on the National Board of Directors for the American Association of Airport Executives for six years as well as served as a Great Lakes Regional Examiner for the industry Accreditation program for three years. Linda served the Great Lakes Chapter in numerous leadership and officer roles. She has been a team member on various Transportation Research Board/Airport Cooperative Research Panels including Project 75 – Airport Leadership Development Programs.

Prior to working with ADK she worked for 21 years with the Columbus Regional Airport Authority (CRAA) in various roles and the last position she held was the Vice-President of Strategy Management. Linda has prior airport experience at Memphis International Airport and Sarasota-Bradenton International Airport.

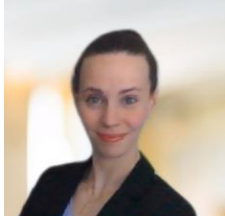


Allison Alexander, Ph.D.

Director, Human Capital

ICF

Dr. Allison Alexander is a Director of Human Capital at ICF. Her work and research focus on employees in the workplace, with deep experience in the areas of employee engagement and well-being, workforce development, workforce planning and staffing, employee assessment, and organizational health assessments. Dr. Alexander has worked with clients across various industries, including work with a variety of transportation organizations and agencies such as work with airports, the Airport Cooperative Research Program (ACRP), transit, highways, state Departments of Transportation, and federal transportation agencies. Through this work, Dr. Alexander has provided solutions that can be implemented to improve the work experience for employees. Dr. Alexander earned her Ph.D. in Industrial-Organizational Psychology from Texas A&M University, where her dissertation focused on telework, flexible work arrangements, and employee effectiveness.



Kathryn Solook
Senior Manager, Human Capital
ICF

Ms. Kathryn Solook is a Senior Manager in Human Capital at ICF. With over ten years of consulting experience, Ms. Solook specializes in efforts involving workforce planning, organizational health, job analysis, competency modeling, career mapping, career development, and change management. She has experience working with both state and federal government clients, as well as those specializing in transportation, such as the Airport Cooperative Research Program (ACRP) and state Departments of Transportation. She is passionate about collaboration to ensure optimal solutions for clients and the impacted workforce alike. Ms. Solook received her M.A. in Organizational Sciences from George Washington University.



Paul Strege, P.E., C.M.
Business Unit Leader, Aviation Services
Mead & Hunt

Paul Strege, CM, PE, is Mead & Hunt's Aviation Services Leader for the Midwest. He oversees and supports the operations of Mead & Hunt's aviation departments in Illinois, Minnesota, North and South Dakota and Wisconsin to serve client needs and achieve a sustainable and growing business. Additionally, Paul provides program leadership and quality assurance for many of Mead & Hunt's aviation projects. Paul serves as a contract manager, Principal-In-Charge and project manager for numerous airports in the Great Lakes and Central Region.



Casey Denny, A.A.E.
Chief Operations Officer
Columbus Regional Airport Authority

Casey Denny, AAE is the Chief Operations Officer for the Columbus Regional Airport Authority, which operates John Glenn International, Rickenbacker International and Bolton Field airports in Columbus, Ohio.

Casey oversees and provides strategic direction for the safety, operation, and maintenance of all CAAA-owned and operated assets, including oversight of Public Safety, Operations, Maintenance, and Aviation Services.

Casey has three decades of experience in airports. Prior to joining CAAA six years ago, Casey was Deputy Director of the Phoenix-Mesa Gateway Airport Authority and started his career at the Arizona Department of Transportation and San Francisco International Airport.

He is an Accredited Airport Executive and serves on the Board of Examiners of the American Association of Airport Executives.